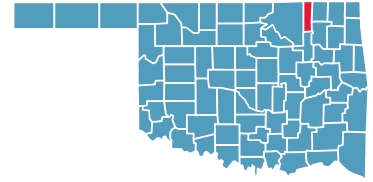


WASHINGTON COUNTY

County Seat: **Bartlesville**



Number of Children (2005): **10,998**

Number of Poor Children (2004): **1,983**

Children are **22.4%** of the county population

Child Poverty Rate: **18.0%**

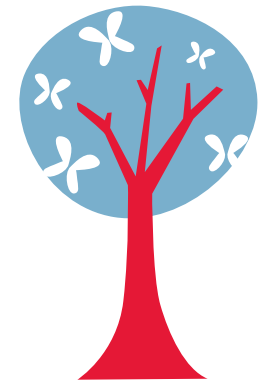
Economic Cluster: **#1, Wealthiest**

Indicator	Base Data	-	Worsened	Improved	+	Recent Data	Rank	
BIRTHWEIGHT								
Low Birthweight (<5.5lbs)	6.8% of live births, 1994-96	-3.4%				7.0% of live births, 2003-05	23	
Very Low Birthweight (<3 lbs, 5oz)	0.5% of live births, 1994-96	-126.5%				1.2% of live births, 2003-05	44	
BIRTHS TO TEENS								
Births to Young Teens (ages 15-17)	29.4/1,000 girls 15-17, 1994-96					32.1%	19.9/1,000 girls 15-17, 2003-05	21
Births to Older Teens (ages 18-19)	99.4/1,000 girls 18-19, 1994-96					20.6%	78.9/1,000 girls 18-19, 2003-05	21
Births to Teens (ages 15-19)	53.4/1,000 girls 15-19, 1994-96					19.7%	42.9/1,000 girls 15-19, 2003-05	20
CHILD ABUSE & NEGLECT								
	23.1 confirmed/1,000 children, FY 1995-97					16.0%	19.4 confirmed/1,000 children, FY 2004-06	48
HIGH SCHOOL DROPOUTS								
	3.3% youth <age 19, SY 2001/02-2003/04	-3.2%				3.4% youth <age 19, SY 2003/04-2005/06	51	
VIOLENT CRIME ARRESTS								
	253.3/100,000 youths 10-17, 1994-96					21.5%	198.9/100,000 youths 10-17, 2003-05	63
MORTALITY								
Infant Mortality (<age 1)	7.7/1,000 live births, 1994-96	-7.9%				8.3/1,000 live births, 2003-05	48	
Child Death (ages 1-14)	21.1/100,000 children 1-14, 1994-96					7.4%	19.6/100,000 children 1-14, 2003-05	19
Teen Death (ages 15-19)	108.0/100,000 teens 15-19, 1994-96					56.4%	47.1/100,000 teens 15-19, 2003-05	12
Child & Teen Death (ages 1-19)	42.5/100,000 youth 1-19, 1994-96					34.9%	27.7/100,000 youth 1-19, 2003-05	8
ECONOMIC CLUSTER								
	76 Economic Index, 1994-96	-6.6%				81 Economic Index, 2003-05	15	

■ state change ■ county change ### = zero base - cannot calculate change County Rank (1 = best) (77 = worst)
 Changes of more than 100%—positive or negative—are graphed with broken bar *Indicates a tie with at least one other county.

CHILDHOOD STRESS INDEX

Category / Indicator	Number	Rate	Rank
BIRTH / GENETIC / BIOLOGICAL			
Very Low Birthweight (2003-05)	7 avg annual	1.2%	44
Autism Reported on IEPs (ages 3-21, FFY 2005-07)	12 avg annual	1.0/1,000	17
ENVIRONMENTAL FACTORS			
Poverty (ages 0-17, 2004)	1,983	18.0%	19
Unemployment (2003-05)	n/a	5.0%	44
EXPOSURE TO TRAUMA			
FEMA Disaster Declarations (Nov 2000-Aug 2007)	9	1.2/1,000 children	55
Adverse Childhood Experiences (ACE Index, 2006/07 Kids Count)	38.6	n/a	50
ACCESS TO TREATMENT			
Untreated by DMHSAS, OJA or Medicaid (ages 9-17, FY 2005-06)			
Untreated Mentally Ill & Substance-Abusers	667 avg annual	54.1%	29
Untreated Serious Emotional Disturbance	224 avg annual	29.3%	
Suicide (ages 5-24, 2003-05)	1 avg annual	5.2/100,000	36



Childhood Stress Rank

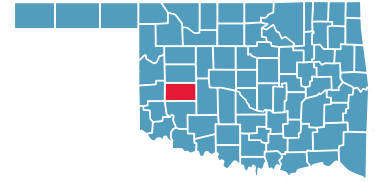
tie for 37

*Indicates a tie with at least one other county.

0.0%* or 0* indicates that, on average, services were provided to numbers of young clients which appear to serve all of the estimated need (prevalence) in the county

WASHITA COUNTY

County Seat: **Cordell**



Number of Children (2005): **2,577**

Number of Poor Children (2004): **511**

Children are **22.5%** of the county population

Child Poverty Rate: **19.8%**

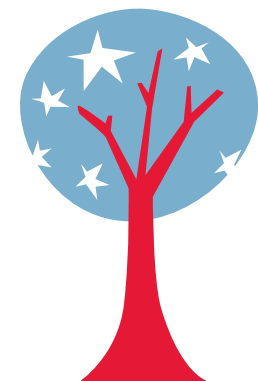
Economic Cluster: **#3, Middle**

Indicator	Base Data	-	Worsened	Improved	+	Recent Data	Rank
BIRTHWEIGHT							
Low Birthweight (<5.5lbs)	6.8% of live births, 1994-96					18.9%	5.6% of live births, 2003-05 8
Very Low Birthweight (<3 lbs, 5oz)	1.9% of live births, 1994-96					67.8%	0.6% of live births, 2003-05 9
BIRTHS TO TEENS							
Births to Young Teens (ages 15-17)	21.2/1,000 girls 15-17, 1994-96	-10.5%					23.4/1,000 girls 15-17, 2003-05 32
Births to Older Teens (ages 18-19)	142.5/1,000 girls 18-19, 1994-96					28.2%	102.2/1,000 girls 18-19, 2003-05 37
Births to Teens (ages 15-19)	57.1/1,000 girls 15-19, 1994-96					5.4%	54.1/1,000 girls 15-19, 2003-05 34*
CHILD ABUSE & NEGLECT	12.0 confirmed/1,000 children, FY 1995-97	-112.8%					25.5 confirmed/1,000 children, FY 2004-06 64
HIGH SCHOOL DROPOUTS	0.9% youth <age 19, SY 2001/02-2003/04	-7.3%					1.0% youth <age 19, SY 2003/04-2005/06 7
VIOLENT CRIME ARRESTS	193.7/100,000 youths 10-17, 1994-96					34.5%	126.8/100,000 youths 10-17, 2003-05 43
MORTALITY							
Infant Mortality (<age 1)	11.0/1,000 live births, 1994-96					62.4%	4.1/1,000 live births, 2003-05 11
Child Death (ages 1-14)	40.4/100,000 children 1-14, 1994-96					100.0%	0.0/100,000 children 1-14, 2003-05 1*
Teen Death (ages 15-19)	123.2/100,000 teens 15-19, 1994-96					68.6%	38.7/100,000 teens 15-19, 2003-05 9
Child & Teen Death (ages 1-19)	60.9/100,000 youth 1-19, 1994-96					80.6%	11.8/100,000 youth 1-19, 2003-05 1
ECONOMIC CLUSTER	171 Economic Index, 1994-96					29.8%	120 Economic Index, 2003-05 26*

■ state change ■ county change ### = zero base - cannot calculate change County Rank (1 = best) (77 = worst)
 Changes of more than 100%—positive or negative—are graphed with broken bar *Indicates a tie with at least one other county.

CHILDHOOD STRESS INDEX

Category / Indicator	Number	Rate	Rank
BIRTH / GENETIC / BIOLOGICAL			
Very Low Birthweight (2003-05)	1 avg annual	0.6%	9
Autism Reported on IEPs (ages 3-21, FFY 2005-07)	1 avg annual	0.5/1,000	5
ENVIRONMENTAL FACTORS			
Poverty (ages 0-17, 2004)	511	19.8%	30*
Unemployment (2003-05)	n/a	3.2%	9
EXPOSURE TO TRAUMA			
FEMA Disaster Declarations (Nov 2000-Aug 2007)	10	0.3/1,000 children	19
Adverse Childhood Experiences (ACE Index, 2006/07 Kids Count)	33.3	n/a	39
ACCESS TO TREATMENT			
Untreated by DMHSAS, OJA or Medicaid (ages 9-17, FY 2005-06)			
Untreated Mentally Ill & Substance-Abusers	123 avg annual	42.3%	15
Untreated Serious Emotional Disturbance	23 avg annual	13.0%	
Suicide (ages 5-24, 2003-05)	0 avg annual	11.0/100,000	64



Childhood Stress Rank

5

*Indicates a tie with at least one other county.

0.0%* or 0* indicates that, on average, services were provided to numbers of young clients which appear to serve all of the estimated need (prevalence) in the county



WOODS COUNTY

County Seat: Alva



Number of Children (2005): 1,472

Number of Poor Children (2004): 257

Children are 17.2% of the county population

Child Poverty Rate: 17.8%

Economic Cluster: #3, Middle

Indicator	Base Data	-	Worsened	Improved	+	Recent Data	Rank	
BIRTHWEIGHT								
Low Birthweight (<5.5lbs)	7.0% of live births, 1994-96					29.2%	5.0% of live births, 2003-05	5
Very Low Birthweight (<3 lbs, 5oz)	0.0% of live births, 1994-96					###	0.0% of live births, 2003-05	1*
BIRTHS TO TEENS								
Births to Young Teens (ages 15-17)	14.7/1,000 girls 15-17, 1994-96					43.9%	8.2/1,000 girls 15-17, 2003-05	1
Births to Older Teens (ages 18-19)	33.7/1,000 girls 18-19, 1994-96	-21.5%					41.0/1,000 girls 18-19, 2003-05	4
Births to Teens (ages 15-19)	25.7/1,000 girls 15-19, 1994-96					2.6%	25.1/1,000 girls 15-19, 2003-05	1
CHILD ABUSE & NEGLECT								
	24.3 confirmed/1,000 children, FY 1995-97					21.8%	19.0 confirmed/1,000 children, FY 2004-06	47
HIGH SCHOOL DROPOUTS								
	2.3% youth <age 19, SY 2001/02-2003/04					22.3%	1.8% youth <age 19, SY 2003/04-2005/06	23
VIOLENT CRIME ARRESTS								
	38.6/100,000 youths 10-17, 1994-96					100.0%	0.0/100,000 youths 10-17, 2003-05	1*
MORTALITY								
Infant Mortality (<age 1)	3.9/1,000 live births, 1994-96					100.0%	0.0/1,000 live births, 2003-05	1*
Child Death (ages 1-14)	45.4/100,000 children 1-14, 1994-96					100.0%	0.0/100,000 children 1-14, 2003-05	1*
Teen Death (ages 15-19)	49.1/100,000 teens 15-19, 1994-96	-1.6%					49.9/100,000 teens 15-19, 2003-05	13
Child & Teen Death (ages 1-19)	46.5/100,000 youth 1-19, 1994-96					59.8%	18.7/100,000 youth 1-19, 2003-05	3
ECONOMIC CLUSTER								
	46 Economic Index, 1994-96	-215.2%					145 Economic Index, 2003-05	36*

■ state change

■ county change

= zero base - cannot calculate change

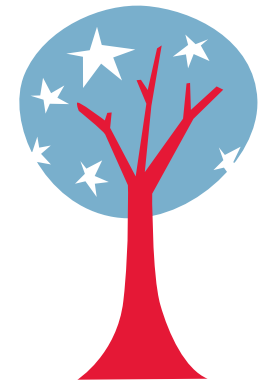
County Rank (1 = best) (77 = worst)

Changes of more than 100%—positive or negative—are graphed with broken bar

*Indicates a tie with at least one other county.

CHILDHOOD STRESS INDEX

Category / Indicator	Number	Rate	Rank
BIRTH / GENETIC / BIOLOGICAL			
Very Low Birthweight (2003-05)	0 avg annual	0.0%	1*
Autism Reported on IEPs (ages 3-21, FFY 2005-07)	1 avg annual	0.6/1,000	10
ENVIRONMENTAL FACTORS			
Poverty (ages 0-17, 2004)	257	17.8%	16*
Unemployment (2003-05)	n/a	8.3%	74
EXPOSURE TO TRAUMA			
FEMA Disaster Declarations (Nov 2000-Aug 2007)	6	0.2/1,000 children	17
Adverse Childhood Experiences (ACE Index, 2006/07 Kids Count)	31.7	n/a	34
ACCESS TO TREATMENT			
Untreated by DMHSAS, OJA or Medicaid (ages 9-17, FY 2005-06)			
Untreated Mentally Ill & Substance-Abusers	75 avg annual	45.9%	19
Untreated Serious Emotional Disturbance	26 avg annual	25.4%	
Suicide (ages 5-24, 2003-05)	0 avg annual	13.8/100,000	69



Childhood Stress Rank

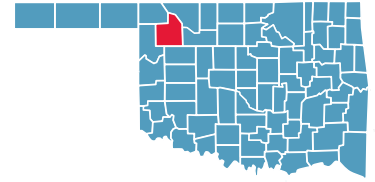
tie for 11

*Indicates a tie with at least one other county.

0.0%* or 0* indicates that, on average, services were provided to numbers of young clients which appear to serve all of the estimated need (prevalence) in the county

WOODWARD COUNTY

County Seat: **Woodward**



Number of Children (2005): **4,357**

Number of Poor Children (2004): **690**

Children are **22.8%** of the county population

Child Poverty Rate: **16.0%**

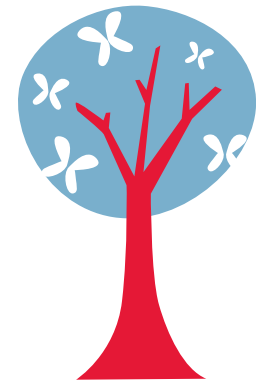
Economic Cluster: **#2, Wealthier**

Indicator	Base Data	-	Worsened	Improved	+	Recent Data	Rank
BIRTHWEIGHT							
Low Birthweight (<5.5lbs)	6.5% of live births, 1994-96	-25.6%				8.2% of live births, 2003-05	54
Very Low Birthweight (<3 lbs, 5oz)	0.7% of live births, 1994-96	-38.0%				1.0% of live births, 2003-05	26
BIRTHS TO TEENS							
Births to Young Teens (ages 15-17)	33.9/1,000 girls 15-17, 1994-96				26.5%	24.9/1,000 girls 15-17, 2003-05	35
Births to Older Teens (ages 18-19)	129.1/1,000 girls 18-19, 1994-96	-0.9%				130.3/1,000 girls 18-19, 2003-05	67
Births to Teens (ages 15-19)	64.0/1,000 girls 15-19, 1994-96				0.2%	63.9/1,000 girls 15-19, 2003-05	52
CHILD ABUSE & NEGLECT							
	17.2 confirmed/1,000 children, FY 1995-97	-33.1%				22.9 confirmed/1,000 children, FY 2004-06	57
HIGH SCHOOL DROPOUTS							
	3.2% youth <age 19, SY 2001/02-2003/04				20.0%	2.6% youth <age 19, SY 2003/04-2005/06	39
VIOLENT CRIME ARRESTS							
	331.7/100,000 youths 10-17, 1994-96				49.6%	167.1/100,000 youths 10-17, 2003-05	58
MORTALITY							
Infant Mortality (<age 1)	11.3/1,000 live births, 1994-96				3.0%	11.0/1,000 live births, 2003-05	64
Child Death (ages 1-14)	8.1/100,000 children 1-14, 1994-96	-400.8%				40.4/100,000 children 1-14, 2003-05	56
Teen Death (ages 15-19)	122.6/100,000 teens 15-19, 1994-96				80.2%	24.2/100,000 teens 15-19, 2003-05	6
Child & Teen Death (ages 1-19)	36.4/100,000 youth 1-19, 1994-96				2.1%	35.6/100,000 youth 1-19, 2003-05	16
ECONOMIC CLUSTER							
	104 Economic Index, 1994-96	-1.9%				106 Economic Index, 2003-05	22

■ state change ■ county change ### = zero base - cannot calculate change County Rank (1 = best) (77 = worst)
 Changes of more than 100%—positive or negative—are graphed with broken bar *Indicates a tie with at least one other county.

CHILDHOOD STRESS INDEX

Category / Indicator	Number	Rate	Rank
BIRTH / GENETIC / BIOLOGICAL			
Very Low Birthweight (2003-05)	3 avg annual	1.0%	26
Autism Reported on IEPs (ages 3-21, FFY 2005-07)	9 avg annual	1.9/1,000	57
ENVIRONMENTAL FACTORS			
Poverty (ages 0-17, 2004)	690	16.0%	12
Unemployment (2003-05)	n/a	3.7%	18*
EXPOSURE TO TRAUMA			
FEMA Disaster Declarations (Nov 2000-Aug 2007)	6	0.7/1,000 children	43
Adverse Childhood Experiences (ACE Index, 2006/07 Kids Count)	53.5	n/a	68
ACCESS TO TREATMENT			
Untreated by DMHSAS, OJA or Medicaid (ages 9-17, FY 2005-06)			
Untreated Mentally Ill & Substance-Abusers	223 avg annual	49.3%	20
Untreated Serious Emotional Disturbance	62 avg annual	22.2%	
Suicide (ages 5-24, 2003-05)	0 avg annual	0.0/100,000	1*



Childhood Stress Rank

tie for 33

*Indicates a tie with at least one other county.

0.0%* or 0* indicates that, on average, services were provided to numbers of young clients which appear to serve all of the estimated need (prevalence) in the county

